

An architectural rendering of a modern building at dusk. The building features a prominent white cantilevered upper floor and a lower level with a light-colored stone or brick facade. Large windows and glass doors are illuminated from within, casting a warm yellow glow. In the foreground, a landscaped courtyard is visible, featuring several large, rounded mounds of dark, textured ground cover or mulch, bordered by dark, vertical-slat planters. The background shows dark, silhouetted mountains under a deep blue twilight sky.

TERRENO EDIFICABILE  
MORGEX VALLE D'AOSTA

*MORGEX AOSTA ITALIA*

# TERRENO EDIFICABILE MORGEX VALLE D'AOSTA

1.700.000 €

---

*Terreno Edificabile Morgex Valle D'Aosta, Italia.*

*Located in the picturesque town of Morgex, Valle d'Aosta, our state-of-the-art hotel project represents a unique opportunity in the ...*

---

7500 mq

 *i m m o b i l i a r e*  
**SANTALFREDO**

Telefono: 039 690 81 37 - Email: [info@immobiliariesantalfredo.it](mailto:info@immobiliariesantalfredo.it)



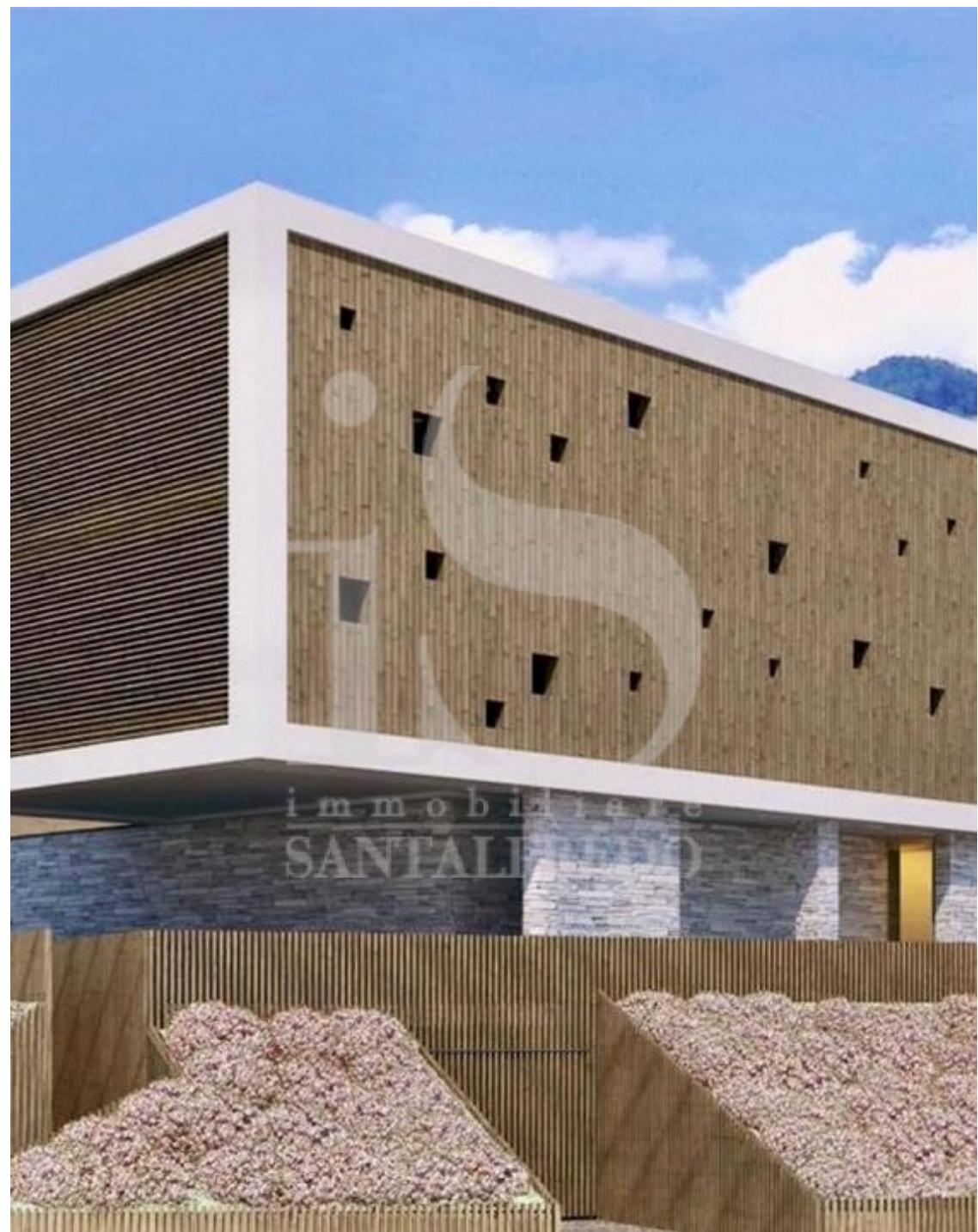
## TERRENO EDIFICABILE MORGEX VALLE D'AOSTA

*... real estate landscape. With cutting-edge architectural design and innovative construction solutions, this hotel promises a welcoming and modern experience.*

LAND FOR SALE ...

**is** immobiliare  
**SANTALFREDO**

Telefono: 039 690 81 37 - Email: [info@immobiliariesantalfredo.it](mailto:info@immobiliariesantalfredo.it)



# DESCRIZIONE

*... WITH APPROVED PROJECT*

*Streamlining the realization process and reducing bureaucratic waiting times: sale of a 7,500 sqm area with an already approved project. With this approach, we offer our buyers benefits that include legal security provided by municipal approval and clarity regarding development possibilities, as well as a reduction in waiting times to start construction.*

*The floor area will be approximately 5,950 sqm, including 4,190 sqm for the hotel, and an additional 1,760 sqm dedicated to technical rooms and an underground garage. The project includes 44 rooms, a wellness area with a pool and spa, a fitness area, a restaurant with a kitchen, and a multipurpose hall. The structure will be ideal for those who want to combine nature, relaxation, culture, sports, tourism, and business ...*

 *i m m o b i l i a r e*  
**SANTALFREDO**

Telefono: 039 690 81 37 - Email: [info@immobiliariesantalfredo.it](mailto:info@immobiliariesantalfredo.it)



immobiliare  
SANTALEREDO

# DETTAGLI AGGIUNTIVI

7500 mq

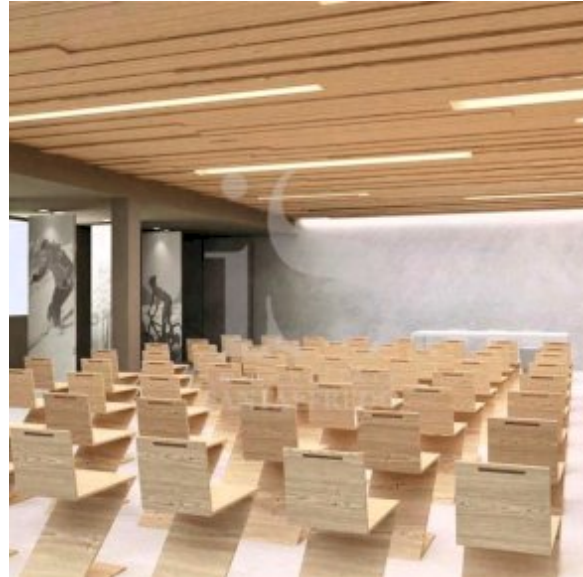
▪ Camere da letto | 44

▪ Classe energetica | A4 10,4

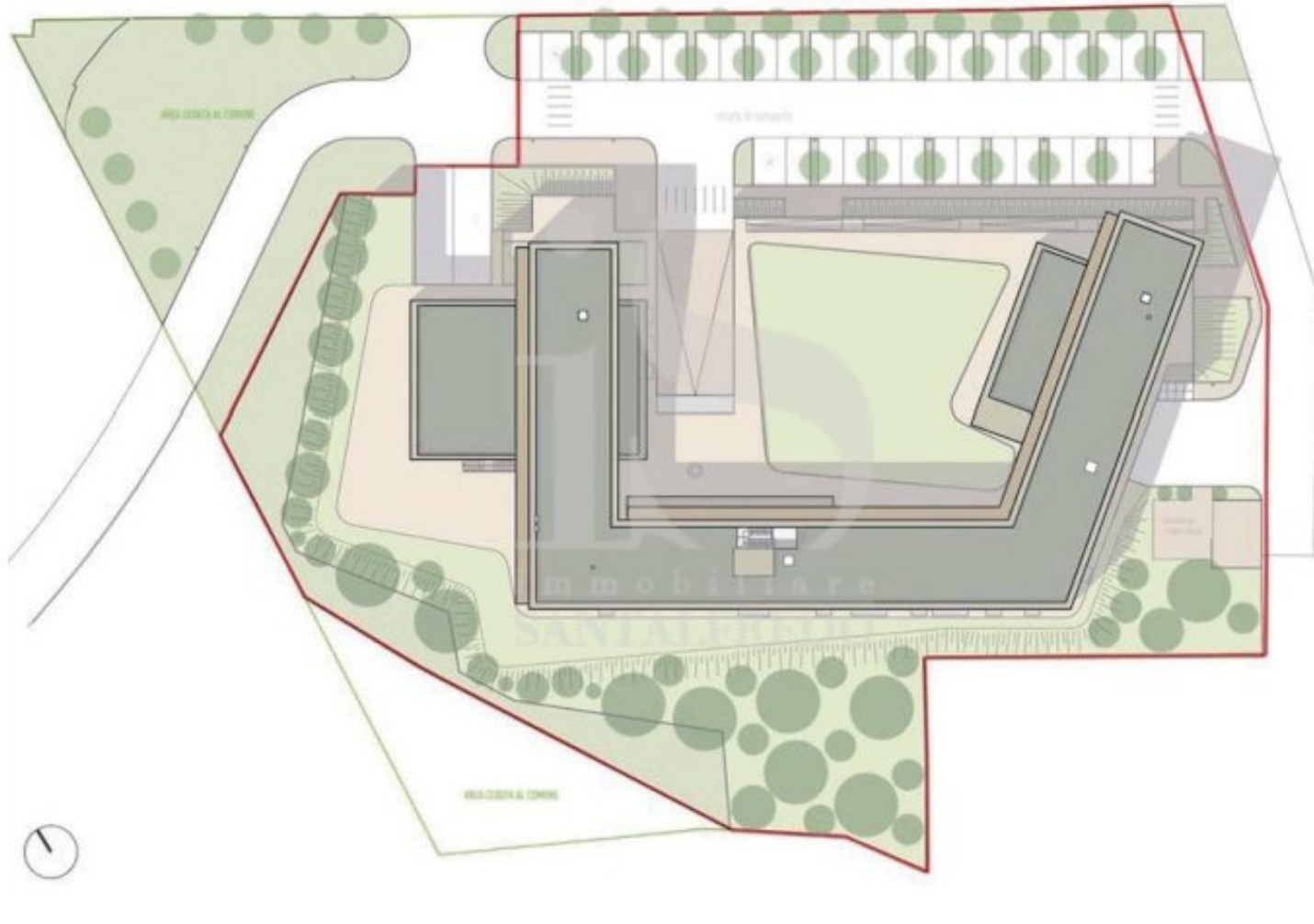


Telefono: 039 690 81 37 - Email: [info@immobiliaresantalfredo.it](mailto:info@immobiliaresantalfredo.it)

# GALLERIA IMMAGINI



# PLANIMETRIA





Immobiliare Santalfredo  
Via Remo Brambilla, 7  
20863 Concorezzo (MB)

Telefono: 039 690 81 37

Email: [info@immobiliariesantalfredo.it](mailto:info@immobiliariesantalfredo.it)

Sito Web: <https://www.immobiliariesantalfredo.it>